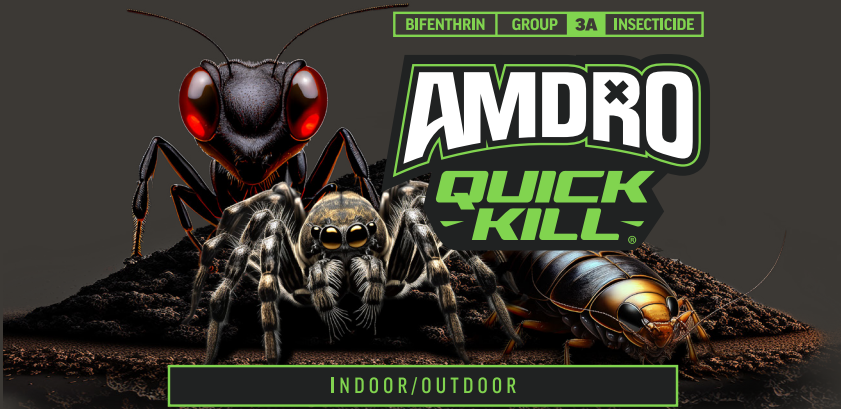


BIFENTHRIN GROUP 3A INSECTICIDE



AMDRO
QUICK KILL

INDOOR/OUTDOOR

INSECT KILLER

READY-TO-USE

KILLS ON CONTACT | **KILLS LISTED INSECTS UP TO 12 MONTHS**

NET CONTENTS:
1 QT
(946 mL)

Active Ingredient	
Bifenthrin	0.05%
Other Ingredients	99.95%
Total	100.00%

* Cis isomers 97% minimum, trans isomers 3% maximum

KEEP OUT OF REACH OF CHILDREN
CAUTION See back booklet for additional precautionary statements
For Residential Indoor and Outdoor Use Only

300535728
AM1201_V10-5/24

AMDR INDOOR/OUTDOOR
QUICK KILL INSECT KILLER
 READY-TO-USE
 For Residential Indoor and Outdoor Use Only

BIFENTHRIN GROUP 3A INSECTICIDE

FIRST AID	
Have the product container or label with you when calling a poison control center or doctor, or going for treatment. For information on this product contact 1-800-265-0761.	
IF IN EYES	<ul style="list-style-type: none"> • Hold eye open and rinse slowly and gently with water for 15-20 minutes. • Remove contact lenses, if present, after the first 5 minutes, then continue rinsing eye. • Call a poison control center or doctor for treatment advice.
IF SWALLOWED	<ul style="list-style-type: none"> • Call a poison control center or doctor immediately for treatment advice. • Have person sip a glass of water if able to swallow. • DO NOT induce vomiting unless told to do so by a poison control center or doctor. • DO NOT give anything by mouth to an unconscious person.
Have the product container or label with you when calling a poison control center or doctor, or going for treatment. You may also contact 1-800-265-0761 for emergency medical treatment information.	
NOTE TO PHYSICIAN: This product is a pyrethroid. If large amounts have been ingested, the stomach and intestine should be evacuated. Treatment is symptomatic and supportive. Digestible fats, oils, or alcohol may increase absorption and so should be avoided.	

PRECAUTIONARY STATEMENTS

HAZARDS TO HUMANS & DOMESTIC ANIMALS
CAUTION: Harmful if swallowed. Causes moderate eye irritation. Avoid contact with eyes, skin or clothing. Wash thoroughly with soap and water after handling and before eating, drinking, chewing gum, or using tobacco.
ENVIRONMENTAL HAZARDS: This pesticide is extremely toxic to fish and aquatic invertebrates. To protect the environment, DO NOT allow pesticide to enter or run off into storm drains, drainage ditches, gutters or surface waters. Applying this product in calm weather when rain is not predicted for the next 24 hours will help to ensure that wind or rain does not blow or wash pesticide off the treatment area. Drift and run-off from treated areas may be hazardous to aquatic organisms in neighboring areas. Care should be used when spraying to avoid fish and reptile pets in/around ornamental ponds. This product is highly toxic to bees exposed to direct treatment or residues on blooming plants or weeds. DO NOT apply this product or allow it to drift to blooming plants crops or weeds if bees are foraging the treatment area.

Protect pollinating insects by following label directions intended to minimize drift and to reduce risk to these organisms.
PHYSICAL OR CHEMICAL HAZARDS: DO NOT apply this product in or on electrical equipment due to the possibility of shock hazard.
NOTICE: To the extent consistent with applicable law, Buyer assumes all responsibility for safety and use not in accordance with directions.

STORAGE AND DISPOSAL
 DO NOT contaminate water, food or feed by storage or disposal. DO NOT pour or dispose down-the-drain or sewer. Call your local solid waste agency for local disposal options.
PESTICIDE STORAGE: Store in a cool, dry, secure place. DO NOT store near seeds, fertilizers, or foodstuffs.
PESTICIDE DISPOSAL AND CONTAINER HANDLING: Pesticide wastes are toxic. Improper disposal of excess pesticides, spray mixture, or rinsate is a violation of Federal law. If these wastes cannot be disposed of by use according to label instructions, contact your State Pesticide or Environmental Control Agency, or the Hazardous Waste representative at the nearest EPA Regional Office for guidance. Non-refillable container. DO NOT reuse or refill this container. Completely empty container into application equipment. Then offer for recycling if available or dispose of empty container in a sanitary landfill, or by other procedures approved by state and local authorities.

Distributed by:
 Central Garden & Pet, Garden Division
 1000 Parkwood Circle, Suite 700
 Atlanta, GA 30339

EPA Reg. No. 53883-485-90098
 EPA Est. No. 92162-MD-001, 88746-MD-1, 59144-GA-1
 Subscript used is first letter of run code on container.



AMDR Quick Kill, Central Garden & Pet and Central Garden & Pet with design are trademarks of Central Garden & Pet Company.

AMDR.com

1-800-265-0761 | gardendivision@central.com
 300535729 | AM1201_V10_05/24



INDOOR/OUTDOOR

INSECT KILLER

READY-TO-USE

NON-STAINING | NO LINGERING ODOR

DIRECTIONS FOR USE

It is a violation of Federal Law to use this product in a manner inconsistent with its labeling.
For both indoor and outdoor use

FOR USE ON	Floor coverings, cracks & crevices in walls and along baseboards, beneath & behind refrigerators, stoves and sinks, & cabinets, around plumbing pipes & fixtures, garbage cans and waste storage areas, window frames & doorways, porches & patios (spot/crack and crevice treatments only), eaves, exterior siding & foundations, in cabinets/pantries, and other areas inside or outside the home where listed insects exist.
PESTS CONTROLLED	Ants (including carpenter ants & foraging fire ants & harvester ants), boxelder bugs, carpet beetles, centipedes, clover mites, crickets, earwigs, firebrat, fleas, flies (including house flies), grasshoppers, millipedes, mosquitoes, moths, confused flour beetle, granary weevil, indian meal moth, red flour beetle, rice weevil, saw-toothed grain beetle, roaches, scorpions, silverfish, sowbugs (pillbugs), spiders (including black widow, brown recluse & daddy long legs spiders), ticks (including ticks that may transmit lyme disease), and other insects that may be found in the use areas.

See booklet for additional precautionary statements

Distributed by:
Central Garden & Pet, Garden Division
1000 Parkwood Circle, Suite 700
Atlanta, GA 30339



CENTRAL
GARDEN & PET

Amdro Quick Kill, Central Garden & Pet and
Central Garden & Pet with design are
trademarks of Central Garden & Pet Company.

EPA Reg. No. 53083-105-01009
EPA Est. No. 92162-MD-001, 00746-MD-1, 59144-GA-1,
Subscript used is first letter of run code on container.

AMDRo.com

1-800-265-0761 | gardendivision@central.com

300535729 | AM1201 V10 - 05/24



8 13576100541 2

FIRST AID

Have the product container or label with you when calling a poison control center or doctor, or going for treatment. For information on this product contact 1-800-265-0761.

IF IN EYES	<ul style="list-style-type: none">• Hold eye open and rinse slowly and gently with water for 15-20 minutes.• Remove contact lenses, if present, after the first 5 minutes, then continue rinsing eye.• Call a poison control center or doctor for treatment advice.
IF SWALLOWED	<ul style="list-style-type: none">• Call a poison control center or doctor immediately for treatment advice.• Have person sip a glass of water if able to swallow.• DO NOT induce vomiting unless told to do so by a poison control center or doctor.• DO NOT give anything by mouth to an unconscious person.
Have the product container or label with you when calling a poison control center or doctor, or going for treatment. You may also contact 1-800-265-0761 for emergency medical treatment information.	
NOTE TO PHYSICIAN: This product is a pyrethroid. If large amounts have been ingested, the stomach and intestine should be evacuated. Treatment is symptomatic and supportive. Digestible fats, oils, or alcohol may increase absorption and so should be avoided.	

PRECAUTIONARY STATEMENTS HAZARDS TO HUMANS & DOMESTIC ANIMALS

CAUTION: Harmful if swallowed. Causes moderate eye irritation. Avoid contact with eyes, skin or clothing. Wash thoroughly with soap and water after handling and before eating, drinking, chewing gum, or using tobacco.

ENVIRONMENTAL HAZARDS: This pesticide is extremely toxic to fish and aquatic invertebrates. To protect the environment, **DO NOT** allow pesticide to enter or run off into storm drains, drainage ditches, gutters or surface waters. Applying this product in calm weather when rain is not predicted for the next 24 hours will help to ensure that wind or rain does not blow or wash pesticide off the treatment area. Drift and run-off from treated areas may be hazardous to aquatic organisms in neighboring areas. Care should be used when spraying to avoid fish and reptile pets in/around ornamental ponds.

This product is highly toxic to bees exposed to direct treatment or residues on blooming plants or weeds. **DO NOT** apply this product or allow it to drift to blooming plants crops or weeds if bees are foraging the treatment area. **Protect pollinating insects by following label directions intended to minimize drift and to reduce risk to these organisms.**

PHYSICAL OR CHEMICAL HAZARDS: DO NOT apply this product in or on electrical equipment due to the possibility of shock hazard.

NOTICE: To the extent consistent with applicable law, Buyer assumes all responsibility for safety and use not in accordance with directions.

DIRECTIONS FOR USE

It is a violation of Federal Law to use this product in a manner inconsistent with its labeling.

For both indoor and outdoor use

For resistance management, this product contains a Group 3A insecticides/acaricides. Any insect/mite population may contain individuals naturally resistant to this product and other Group 3A insecticides/acaricides. The resistant individuals may dominate the insect/mite population if this group of insecticides/acaricides are used repeatedly in the same fields. Appropriate resistance-management strategies should be followed.

SPRAY DRIFT ADVISORIES

THE APPLICATOR IS RESPONSIBLE FOR AVOIDING OFF-SITE SPRAY DRIFT. BE AWARE OF NEARBY NON-TARGET SITES AND ENVIRONMENTAL CONDITIONS.

WIND

Avoid applications during gusty wind conditions

Handheld Technology Applications:

- Take precautions to minimize spray drift

People and pets may enter treated areas after spray has dried.

- **DO NOT** apply within 25 feet of aquatic habitats (such as, but not limited to, lakes, reservoirs, rivers, streams, marshes, ponds, estuaries, and commercial fish ponds).
- **DO NOT** spray the product into fish pools, ponds, streams, or lakes. **DO NOT** apply directly to sewers or storm drains, or to any area like a drain or gutter where drainage to sewers, storm drains, water bodies, or aquatic habitat can occur.
- **DO NOT** allow the product to enter any drain during or after application.

- **DO NOT** apply directly to impervious horizontal surfaces such as sidewalks, driveways, and patios except as a spot or crack-and-crevice treatment.
- **DO NOT** apply or irrigate to the point of runoff.
- **DO NOT** make applications during the rain. Avoid making applications when rainfall is expected before the product has sufficient time to dry (minimum 4 hours).
- Rainfall within 24 hours after application may cause unintended runoff of pesticide application.
- **DO NOT** apply when the wind speed is greater than 15 mph.
- For soil applications, **DO NOT** apply by ground within 25 feet of lakes, reservoirs, rivers, permanent streams, marshes, or natural ponds, estuaries and commercial fish farm ponds.
- **DO NOT** allow to enter indoor or outdoor drains
- No permita la entrada a desagües internos o externos



All outdoor spray applications must be limited to spot or crack-and-crevice treatments only, except for the following permitted uses, if allowed elsewhere on this label:

1. Applications to soil or vegetation, as listed on this label around structures;
2. Perimeter band treatments of 7 feet wide or less from the base of a man-made structure to pervious surfaces (e.g., soil, mulch, or lawn);
3. Applications to underside of eaves, soffits, doors, or windows permanently protected from rainfall by a covering, overhang, awning, or other structure;
4. Applications around potential exterior pest entry points into man-made structures such as doorways and windows, when limited to a band not to exceed one inch;
5. Applications to vertical surfaces (such as the side of a man-made structure) directly above impervious surfaces (e.g., driveways, sidewalks, etc.), up to 2 feet above ground level;
6. Applications to vertical surfaces directly above pervious surfaces, such as soil, lawn, turf, mulch or other vegetation only if the pervious surface does not drain into ditches, storm drains, gutters, or surface waters.

Treat surfaces to ensure thorough coverage but avoid runoff.

To treat insects harbored in voids and crack-and-crevices, applications must be made in such a manner to limit dripping and avoid runoff onto untreated structural surfaces and plants.

FOR USE ON

Floor coverings, cracks & crevices in walls and along baseboards, beneath & behind refrigerators, stoves and sinks, & cabinets, around plumbing pipes & fixtures, garbage cans and waste storage areas, window frames & doorways, porches & patios (spot/crack and crevice treatments only), eaves, exterior siding & foundations, in cabinets/pantries, and other areas inside or outside the home where listed insects exist.

PESTS CONTROLLED

Ants (including carpenter ants & foraging fire ants & harvester ants), boxelder bugs, carpet beetles, centipedes, clover mites, crickets, earwigs, firebrat, fleas, flies (including house flies), grasshoppers, millipedes, mosquitoes, moths, confused flour beetle, granary weevil, indian meal moth, red flour beetle, rice weevil, saw-toothed grain beetle, roaches, scorpions, silverfish, sowbugs (pillbugs), spiders (including black widow, brown recluse & daddy long legs spiders), ticks (including ticks that may transmit Lyme disease), and other insects that may be found in the use areas.

APPLICATION INSTRUCTIONS

Make sure container is securely closed and **shake well before use**. Adjust spray nozzle to deliver a stream for cracks and crevices or a coarse spray for other areas. Hold sprayer 12 inches from the insect or surface being sprayed. Use only for spot treatment. Spot treatments must not exceed two square feet in size (for example, 2 ft. by 1 ft. or 4 ft. by 0.5 ft.). **DO NOT** spray into the air. Spray until slightly wet without soaking. **DO NOT** allow this product to contact food, foodstuffs, food preparation areas or utensils and water supplies.

INDOOR APPLICATIONS

Use Amdro Quick Kill® Indoor/Outdoor Insect Killer Ready-To-Use to control ants (including carpenter ants & foraging fire ants & harvester ants), carpet beetles, crickets, earwigs, firebrats, fleas, flies, (including house flies), mosquitoes, moths, roaches, scorpions, silverfish, spiders (including black widow, brown recluse, & daddy long legs spiders) & ticks (including ticks that transmit Lyme disease)

Spray corners of rooms and closets, cracks and crevices in walls, along baseboards, beneath & behind refrigerators, stoves, sinks, & cabinets, around plumbing pipes & fixtures, around doors & window frames and other areas where these insects may be found.

FLEAS & TICKS

(INCLUDING TICKS THAT MAY TRANSMIT LYME DISEASE)

Remove pets from the areas to be treated and **DO NOT** allow back into the treated areas until the spray has dried.

DO NOT TREAT PETS WITH THIS PRODUCT. To control the source of flea infestations, pets inhabiting the treated premises should themselves be treated with a product registered for application to animals.

Spot-Treat infested areas such as pet resting areas and other localized areas of floor covering where fleas and ticks may be present.

Remove and replace old pet bedding with clean fresh bedding after treating for fleas and ticks in the pet area.

PANTRY PESTS

Remove all items from cabinets/ pantries. While removing, inspect all food items, especially dried food products, and dispose of any infested items. Clean cabinets/pantries thoroughly. Spray cracks and crevices along shelves in cabinets/pantries. After spray has dried thoroughly, replace only non-infested items.

OUTDOOR APPLICATIONS

Use Amdro Quick Kill® Indoor/Outdoor Insect Killer Ready-To-Use to control ants (including carpenter ants, & foraging fire ants, and harvester ants), boxelder bugs, centipedes, clover mites, crickets, earwigs, fleas, flies, (including houseflies), grasshoppers, millipedes, mosquitoes, moths, roaches, scorpions, sowbugs (pillbugs), spiders (including black widow, brown recluse & daddy long leg spiders), ticks (including ticks that transmit Lyme disease) and other insects that may be a problem.

Spray garbage cans and waste storage areas, around window frames and doorways, surfaces around light fixtures, cracks and crevices around porches and patios (spot/crack and crevice treatments only), eaves, exterior siding, foundations and localized infestations in weeds or around ornamental plants.

STORAGE AND DISPOSAL

DO NOT contaminate water, food or feed by storage or disposal.

DO NOT pour or dispose down-the-drain or sewer. Call your local solid waste agency for local disposal options.

PESTICIDE STORAGE: Store in a cool, dry, secure place. **DO NOT** store near seeds, fertilizers, or foodstuffs.

PESTICIDE DISPOSAL AND CONTAINER HANDLING: Pesticide wastes are toxic. Improper disposal of excess pesticides, spray mixture, or rinsate is a violation of Federal law. If these wastes cannot be disposed of by use according to label instructions, contact your State Pesticide or Environmental Control Agency, or the Hazardous Waste representative at the nearest EPA Regional Office for guidance. Non-refillable container. **DO NOT** reuse or refill this container. Completely empty container into application equipment. Then offer for recycling if available or dispose of empty container in a sanitary landfill, or by other procedures approved by state and local authorities.

